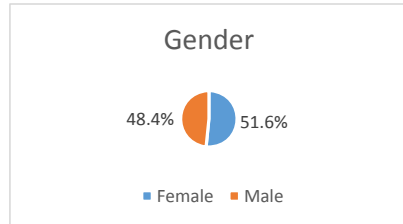


**AAA Scholarship Foundation
Georgia Income Based Scholarship - Awarded Students
Demographics for Q1 FY2019_2020**

Student-Specific

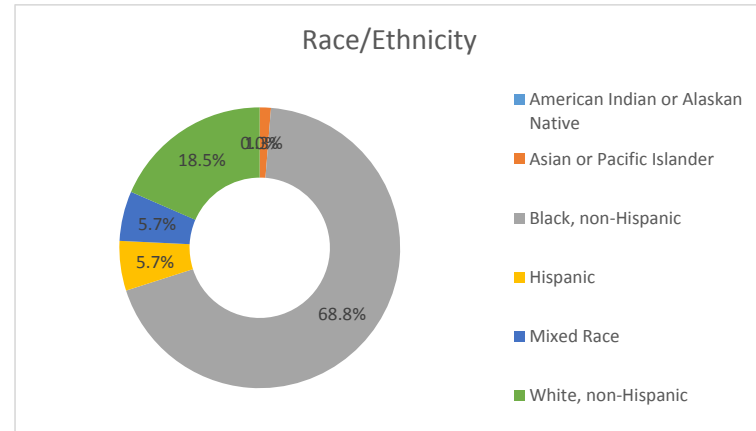
Gender

Female	51.6%
Male	48.4%



Race/Ethnicity

American Indian or Alaskan Native	0.0%
Asian or Pacific Islander	1.3%
Black, non-Hispanic	68.8%
Hispanic	5.7%
Mixed Race	5.7%
White, non-Hispanic	18.5%

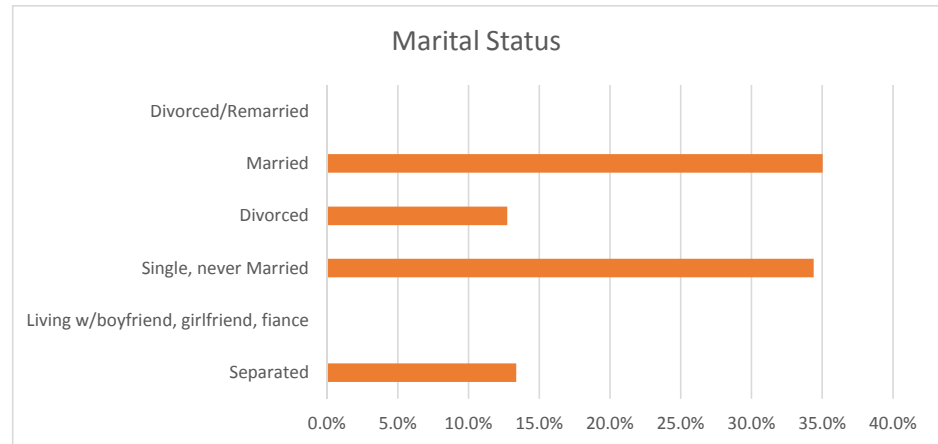


Household

Average Household Size	4
Average Household Income	\$ 35,429
Single-Parent Home	60.5%
Average Scholarship Awarded	\$ 7,189
Average Scholarship Funded	\$ 6,451

Marital Status

Separated	13.4%
Living w/boyfriend, girlfriend, fiance	0.0%
Single, never Married	34.4%
Divorced	12.7%
Married	35.0%
Divorced/Remarried	0.0%
Other	2.5%
Widowed	1.9%



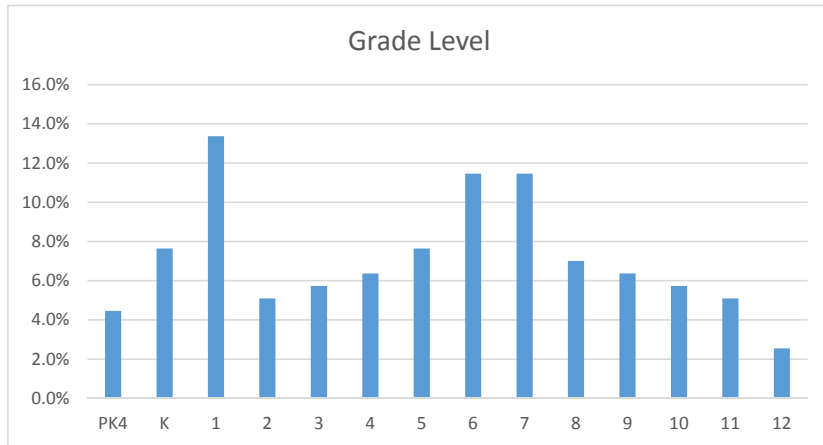
AAA Scholarship Foundation

Georgia Income Based Scholarship - Awarded Students

Demographics for Q1 FY2019_2020

Student-Specific

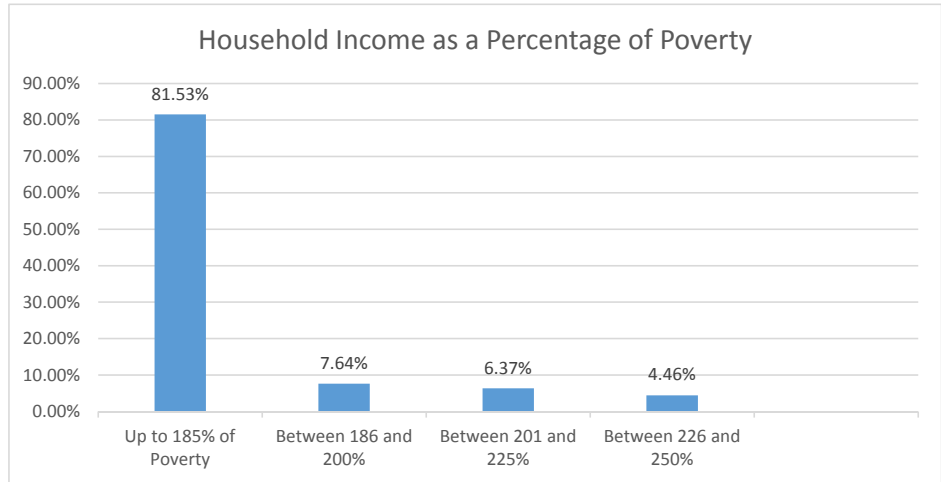
Grade Level	
PK4	4.5%
K	7.6%
1	13.4%
2	5.1%
3	5.7%
4	6.4%
5	7.6%
6	11.5%
7	11.5%
8	7.0%
9	6.4%
10	5.7%
11	5.1%
12	2.5%



Learn how a AAA Scholarships change the lives of students at:
<https://www.aascholarships.org/category/spotlight/>

Household

Household Income as a Percentage of Poverty	
Up to 185% of Poverty	81.53%
Between 186 and 200%	7.64%
Between 201 and 225%	6.37%
Between 226 and 250%	4.46%



Household County

Bibb	1.9%
Bulloch	0.6%
Chatham	23.6%
Cherokee	1.3%
Clayton	10.2%
Cobb	6.4%
Dekalb	9.6%
Douglas	1.3%
Effingham	0.6%
Fulton	3.8%
Gwinnett	6.4%
Henry	9.6%
Jasper	1.3%
Liberty	1.9%
Lowndes	0.6%
Newton	0.6%
Richmond	3.2%
Rockdale	6.4%
Spalding	7.6%
Upson	3.2%

